



# AlphaPAT

## Single & 3 Phase Portable Appliance Tester



\*Additional Clamp required for 3-Phase testing

Lightweight, but powerful portable appliance tester proving popular in all industry sectors including hire companies with both New Zealand and Australia's largest companies purchasing this model.

### AlphaPAT Features:

- PC updateable firmware** means tester is updateable if Standards should change.
- Auto Test Codes** that are non user changeable – meaning “no tampering”
- Custom Testing** with user adjustable menus also included
- Tests All single & 3 Phase appliances**
- Earth Test:** 100mA, 10A or 25Amps.
- Insulation Test:** 250/500V
- Mains Powered Leakage Test** (operational) 230V or \*415V
- Lead Testing**
- On-board help menu** and test prompts
- Checks building supply** when powering up.
- Download Software** – basic and comprehensive programmes available
- RFID and bar code capable**
- 2 year warranty**

## "UPSIZE" to an AlphaPAT SupaPAT

### SupaPAT™ Features:

- 7 different coloured tear resistant tags**
- Pass label printed** after each test
- Danger label printed** on failed test
- Your company logo/words** printed on the label
- Double bar code printing** to enable easy repeat testing
- Fast reliable** user friendly printer
- Comprehensive software** programme RSR SimplyPATs
- Visual logging** for keeping track of other assets
- Custom designed** water resistant case to hold all your testing equipment



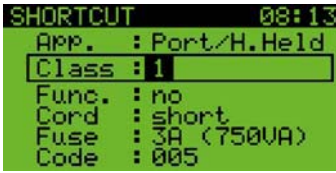
Budget priced AlphaPAT SupaPAT™ packed with features including the ability to test 3 Phase appliances. Comes with AlphaPAT Tester, Thermal tough vinyl label printer, bar code scanner and RSR SimplyPATs comprehensive software for all your downloading and printing needs. All tests done quickly and simply enabling even faster testing and tagging including a double barcode for repeat testing.



Also available 'in-house' competency training for testing to AS/NZS3760 – see over for more details



- Autotest menu designed for New Zealand and Australia
- Single test menu
- Custom test menu for adding your own tests
- Storing, downloading and direct printing of test results.



Simple access to pre-programmed Autotests



Adjustable limits and user friendly graphic LCD accelerate the measuring procedure.

Clear and easy access to test procedure: - select the auto test, press START



Mobile phone type keypad for fast entering of appliance data and date etc

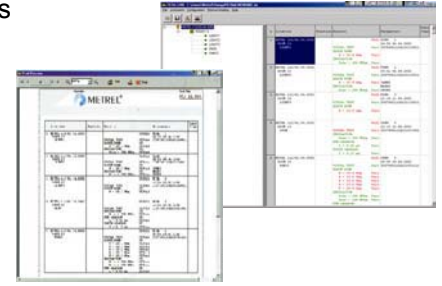
## Professional PC SW package, printout facilities

The accompanying professional PC SW Package PATLink enables:

- viewing and analysing of measurement results.
- storing of results for documentation
- operating of test reports
- printing of test reports



Also available PC SW package SimplyPATs which supports most common PAT testers.



## Latest technology for appliance identification

### RFID technology

- stores test appliance type procedure, test date, test results, comments in small RFID tags
- simple RFID reader/writer

### Bar code technology

- stores test procedure (when using a printer) and appliance ID

## Technical Specification

<b>Earth bond test</b>		
Test currents:	10A, 25A	
Measuring range:	0.00 ÷ 19.99Ω	Accuracy:±(5% of r.+5 dig.)
<b>Earth screen test</b>		
Test current	100mA, 200mA	
Measuring range	0.00 ÷ 19.99Ω	Accuracy:±(5% of r.+5 dig.)
<b>Insulation test</b>		
Test voltages	250V DC, 500V DC	
Measuring range	0.00 ÷ 19.99MΩ	Accuracy:±(5% of r.+5 dig.)
<b>Substitute leakage test</b>		
Test voltage	40V AC	
Measuring range:	0.00 ÷ 19.99mA	Accuracy:±(5% of r.+5 dig.)
<b>Differential leakage test</b>		
Measuring range	0.00 ÷ 19.99mA	Accuracy:±(5% of r.+5 dig.)
<b>Touch leakage test</b>		
Measuring range	0.00 ÷ 1.99mA	Accuracy:±(5% of r.+5 dig.)
<b>Functional test</b>		
Current measuring range:	0.00 ÷ 15.99A	Accuracy:±(5% of r.+3 dig.)
Power measuring range:	0.00 ÷ 3.69kVA	Accuracy:±(5% of r.+3 dig.)
<b>IEC lead test</b>		
Test Voltage	50V DC	
Faults	Open, Short, Crossed, Multiple faults	
<b>Clamp Current (True RMS) 3 Phase testing</b>		
Current range:	0.0 ÷ 99.9mA	Accuracy:±(10% of r.+5 dig.)
Current range:	100 mA ÷ 19.99A	Accuracy:±5% of r.
<b>L-n pretest</b>		
Tests between L and N. Pass level is 30kΩ ± 6kΩ.		
<b>Low range PE leakage test (VDE 0751)</b>		
Measuring range:	0.000mA ÷ 19.99mA	Accuracy:±(3% +2 dig.)

## General Specifications

<b>Mains Voltage</b>	230V AC (+6%, -10%), 50/60 Hz
<b>Display</b>	Graphic 128 x 64 dots matrix display
	backlight
<b>RS232 interface</b>	Baud rate 115,200 bps
<b>Memory</b>	4 Mbit data flash memory
<b>Pollution degree</b>	2
<b>Degree of protection</b>	IP41
<b>Overvoltage category</b>	CAT II / 300V
<b>Protection classification</b>	double insulation
<b>Dimensions (w x h x d)</b>	265 x 110 x 185
<b>Mass (without accessories)</b>	3.5 kg
<b>Working temperature range</b>	-10 ÷ +50°C



AlphaPAT Standard Set: Code MI2142

AlphaPAT Earth Bond/Touch leakage clip  
Mains cable  
Instructions manual  
Declaration of conformity  
Declaration of warranty  
Product verification data